

PETROG Newsletter June 2024

Contents

1. PETROG v5.4.1.0 release
2. What's New
3. On-site or Remote Installation Support and Training
4. Exhibiting to Ceramic Petrographers

PETROG v5.4.1.0 release

We are pleased to announce the release of PETROG v5.4.1.0. This new version release adds a number of new features. We recommend that all users should update to this version as soon as possible, by visiting:

[PETROG5 Downloads](#)

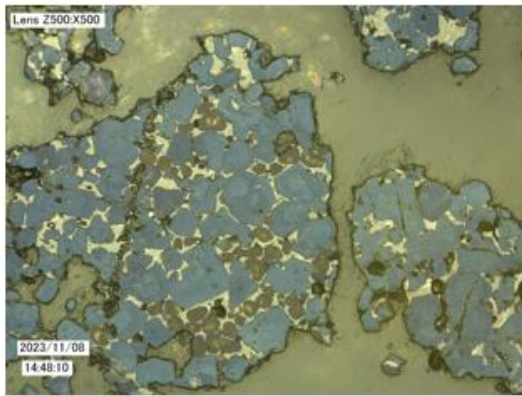
This version is available for download to all users that have purchased PETROG in the last 12 months, or that have an active maintenance agreement. In order to initiate/renew your maintenance, or if you are not sure of your maintenance status, please e-mail support@petrog.com

What's New

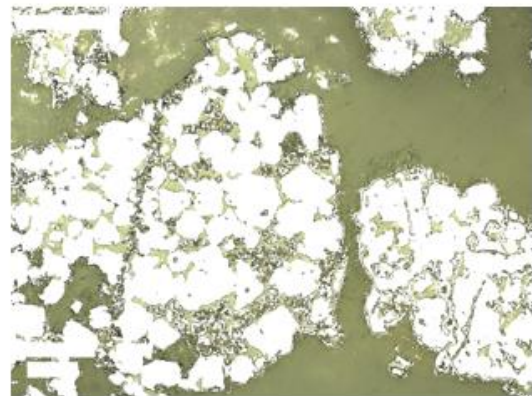
Colour Analysis Tool

Extensions to the functionality within this tool, including:

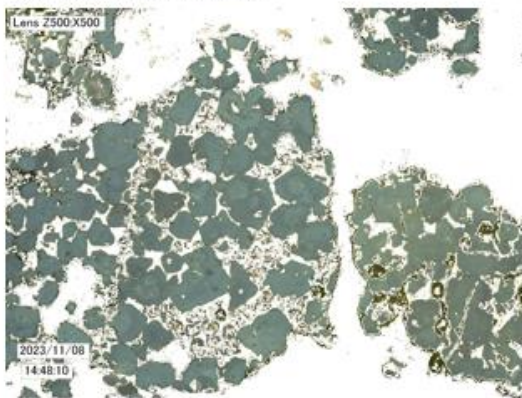
A material type can be extracted via an Output Layer, and then a second Output Layer applied to the remaining material:



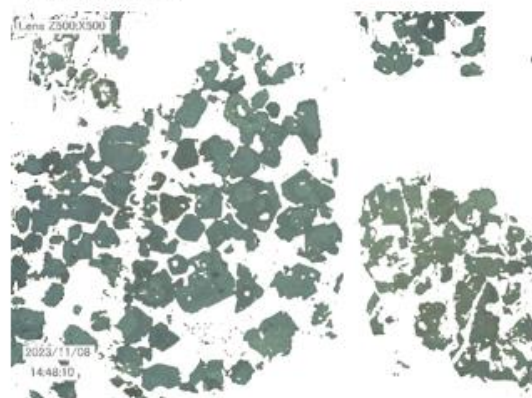
Original Image – clusters of alite crystals surrounded by epoxy



Extraction of epoxy by application of first Output Layer



Removal of epoxy from original image



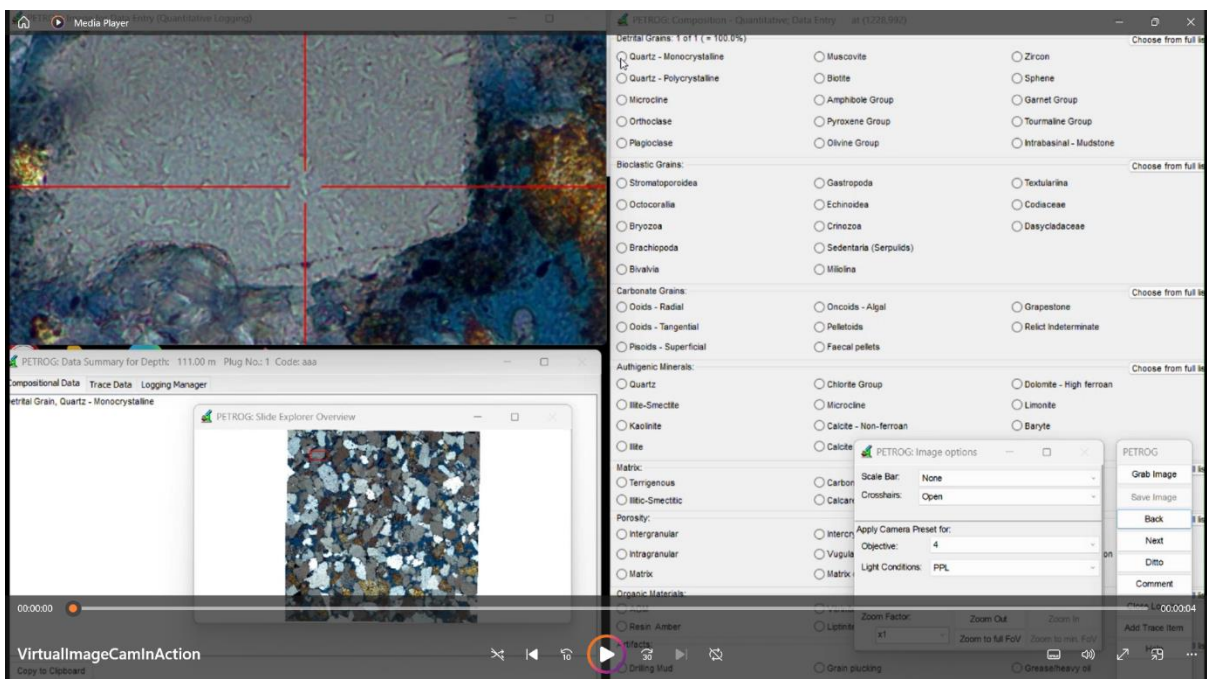
Extraction of alite from remaining material (removing belite and free lime)

Can now use region selection when creating output layers, making it simpler to generate effective output layers that are to be applied to images:



Point counting a Whole Slide Image

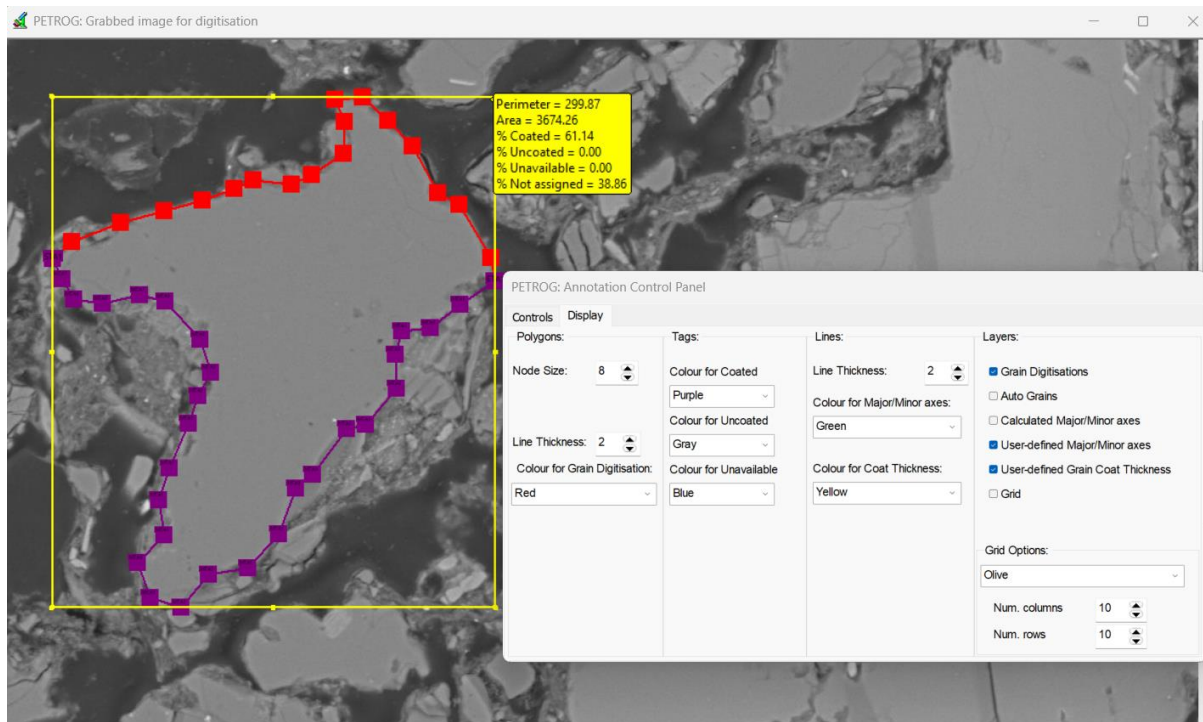
Further to the introduction of this functionality in the last release, it is now possible to collect quantitative compositional and textural data from imported whole slide images in any camera version of PETROG (previously a separate version was needed). A number of workflow improvements and fixes have been added.



Grain outline logging

New options to determine grain coating for input to Touchstone as per Sandstone Petrography, Petrology and Modelling (Taylor, Lander and Bonnell); If selecting an existing

polyline, quantitative information is displayed about the selection.



Changes necessitated by the software environment

We do not always mention changes in this category. Each release there are typically many changes which may be hidden or may be pre-emptive but are necessary for one of several possible reasons, including:

- An operating-system-level change to the way some Windows are ordered on screen meant that some PETROG messages were being hidden, causing an apparent 'hanging' situation. We have re-structured the messaging system to avoid this happening. This affects information/warning/error messages and some user-interaction (question-response) dialogues.
- Camera manufacturers occasionally issue a new Software Development Kit (SDK), the interface software used by PETROG to communicate with the camera. This is typically when there is a new release of Windows or the manufacturer introduces a new camera model. This always requires considerable re-testing of PETROG and often some re-engineering.
- Each piece of hardware has its own drivers for communicating with applications. In the case of older equipment, such as our early models of stepping stage, these can require updates and resultant changes to PETROG.
- We are always looking out for trends in software development and possible future changes to underlying technologies that could affect PETROG. A major trend at present is driven by mobile devices and a desire for standardisation across mobile and traditional computing devices. We are gradually introducing changes to PETROG that should avoid serious problems in future. As a positive side-effect, some of these new developments can significantly improve the speed of image display and image analysis in PETROG.

This category does emphasise the benefits of a maintenance contract to make sure you can keep your version of PETROG updated.

For full details of the changes in this release, please visit:

[PETROG5 Changelog](#)

On-site or Remote Installation Support and Training

CVS are still able to offer Remote Instructor-Led Training (RILT) for PETROG. The software is rich in features, and so user training can help you get the best out of the tools available, to make your workflow more efficient and allowing you to concentrate on producing quality data.

Even if you are already using PETROG, consider a refresher course to ensure you are making the best use of your software.

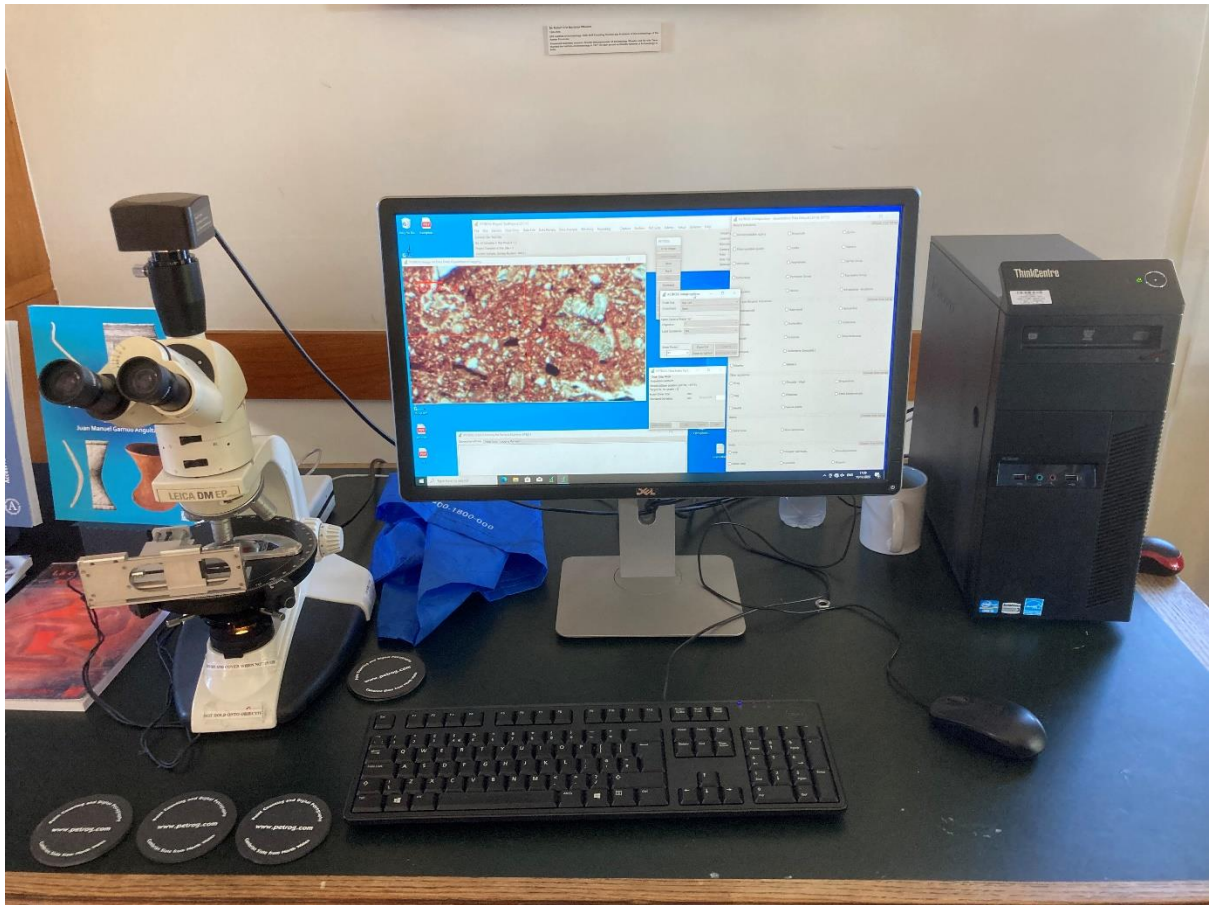
For more information, including a listing of available training modules, please visit:

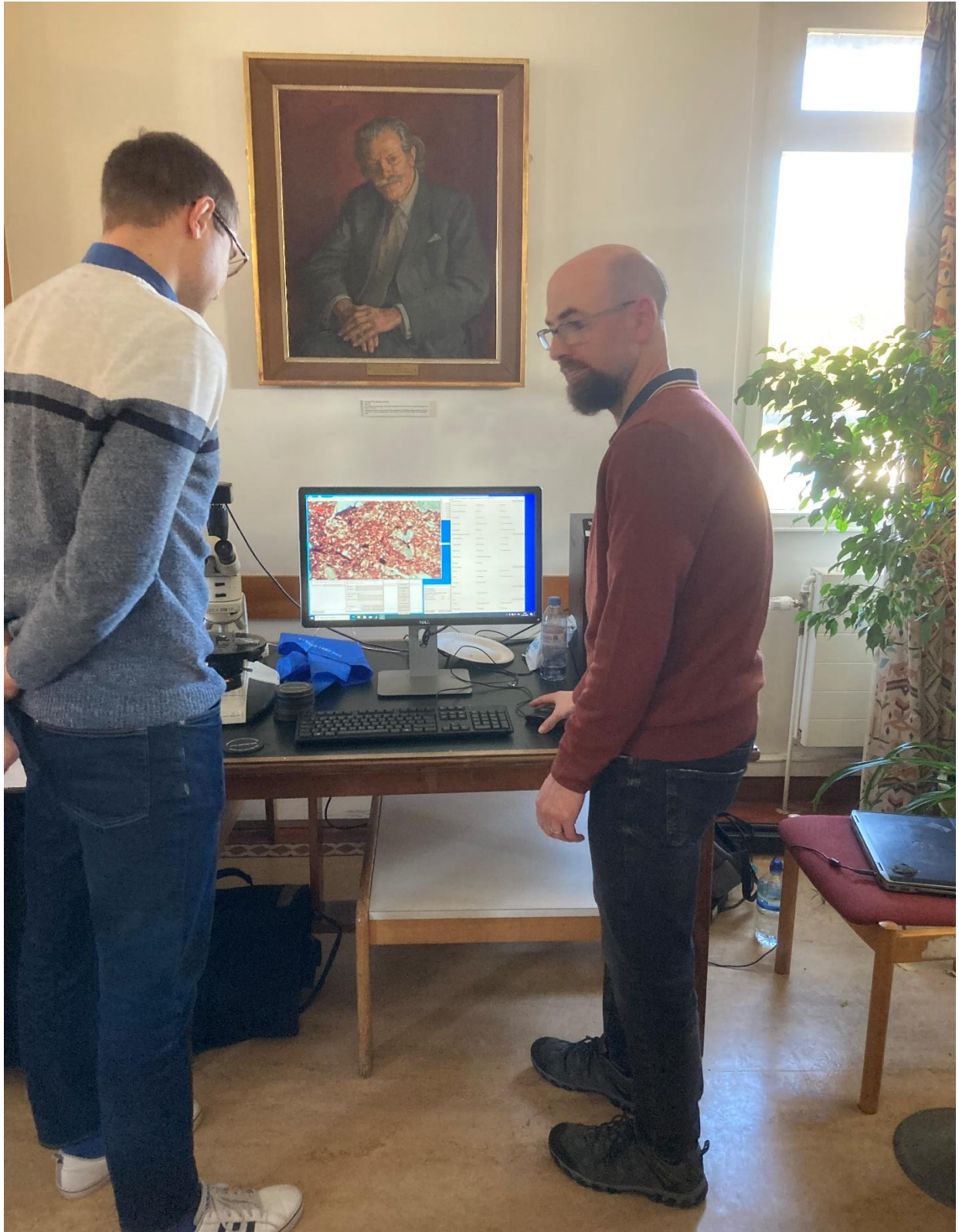
[PETROG Training](#)

Alternatively, we are pleased to be able to offer on-site visits again. Please contact us if you would like to discuss the possibility of an on-site visit, either for training and/or for supporting migration of your installation, data and images from v4 to v5.

Exhibiting to Ceramic Petrographers

Ricki Walker spent three days in London back in November, exhibiting PETROG at the Ceramic Petrology Group meeting held at University College London (UCL). There was lots of interest in the capabilities of the system for analysing ceramics samples, as demonstrated by the fact that researchers in this field at UCL, Universität Tübingen (Germany) and Stanford University are using PETROG to collect and analyse data. It was a very busy time at the microscope giving demonstrations, answering questions and handing out our sought after Welsh Cambrian slate coasters!





Best regards,

The PETROG team